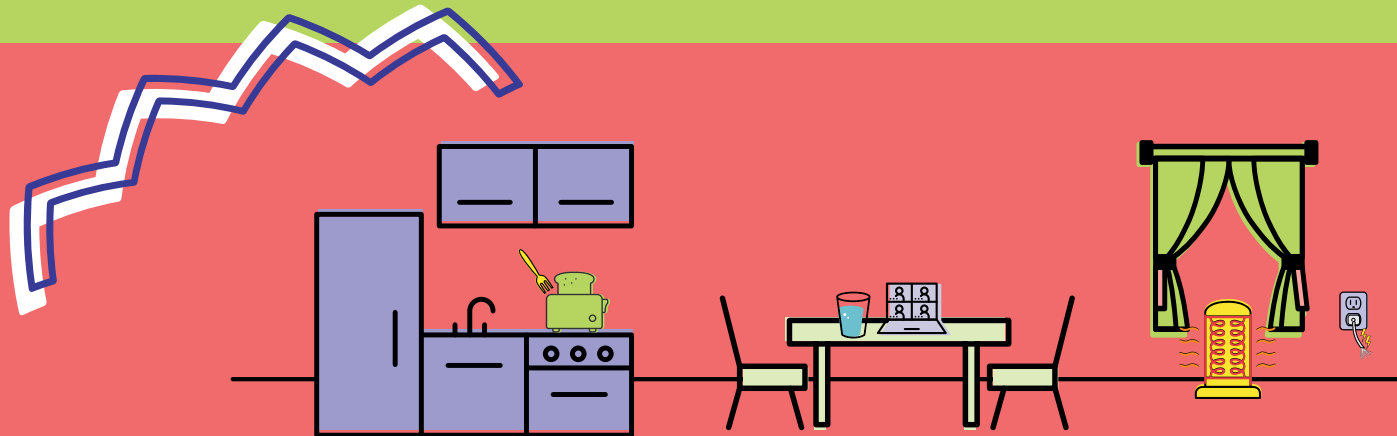


# ELECTRIC SAFETY



PLAY IT SAFE AROUND ELECTRICITY!



INDOOR ELECTRIC SAFETY (fill in the blanks and circle the safety hazards above):

- 1 Never put \_\_\_\_\_, drinks or other liquids on or near electrical equipment.
- 2 Never remove bread stuck in a \_\_\_\_\_ while it is plugged in.
- 3 Keep space \_\_\_\_\_ THREE feet away from anything flammable, like curtains.
- 4 Damaged electrical \_\_\_\_\_ are dangerous.

Word Bank:            cords            heaters            toaster            water

Planting a tree? Building a fence? Installing a mailbox?  
**Contact 811** ([colorado811.org](http://colorado811.org)) before you dig to locate underground lines such as **water, wastewater, electric** and **natural gas** lines.

Fill in the words:

E \_ \_ \_ c \_ \_ \_ \_ c

G \_ \_ \_

W \_ \_ \_ \_ r

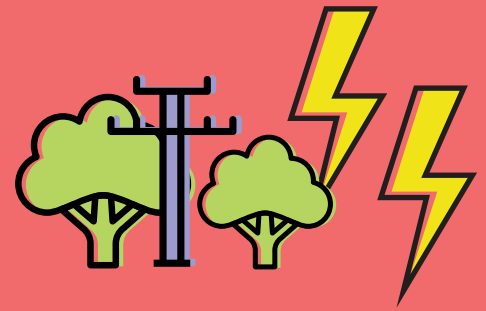
W \_ \_ \_ \_ e w \_ \_ \_ \_ \_ r



**Know what's below.  
Call before you dig.**



# OUTDOOR ELECTRIC SAFETY



## OUTDOOR ELECTRIC SAFETY (fill in the blanks with the words below):

- 1 Lightning is deadly! When thunder roars, go \_\_\_\_\_!
- 2 Never climb trees near \_\_\_\_\_. Contact with a line is dangerous and deadly.
- 3 Do not climb on electric \_\_\_\_\_ marked with a warning sign.
- 4 Stay far away from a \_\_\_\_\_ line or supporting wire near a power line.

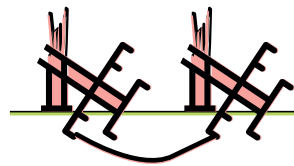
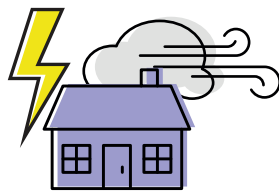
### Word Bank:

equipment

indoors

downed

power lines



## true or false

1. T / F: Electricity travels at the speed of light, more than 186,000 miles per second!
2. T / F: It is okay to stand on electric utility boxes.
3. T / F: A spark of static electricity can measure up to 3,000 volts.
4. T / F: Electricity takes the easiest path to the ground.
5. T / F: Electricity can be made from wind, water and the sun.
6. T / F: Climbing trees near power lines is okay if the tree isn't too tall.
7. T / F: Water and electricity are a good mix if the water is warm.
8. T / F: It is dangerous to plug too many things into one electric outlet.

## Renewable and Non-renewable Energy

**Non-renewable** energy resources are available in limited supply and take a long time to regenerate. **Renewable** resources are replaced over short periods of time naturally.

Place an "N" next to the non-renewable resources and an "R" next to the renewable resources.

