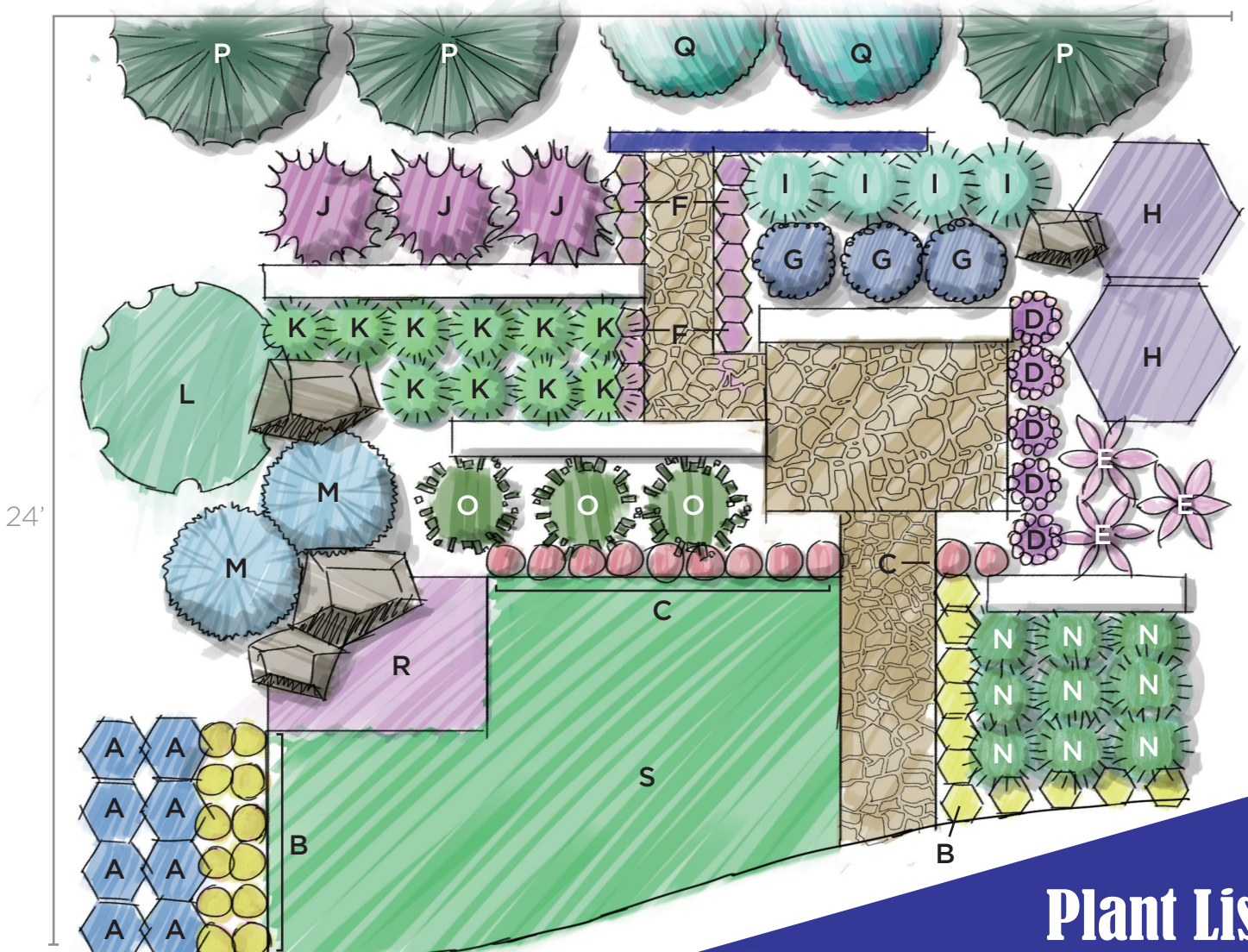


# Contemporary

A landscape design for your modern home

31'



## Plant List

- |                                  |   |                                  |
|----------------------------------|---|----------------------------------|
| <b>A</b> MAY NIGHT SALVIA (8)    | <b>H</b> PETITE INDIGO BUTTERFLY BUSH (2) | <b>O</b> CAROL MACKIE DAPHNE (3) |
| <b>B</b> SNOW IN SUMMER (23)     | <b>I</b> SHENANDOAH SWITCH GRASS (4)      | <b>P</b> TANNENBAUM MUGO (3)     |
| <b>C</b> PINK SEA THRIFT (11)    | <b>J</b> ROSE GLOW BARBERRY (3)           | <b>Q</b> WESTERN SAGEBRUSH (2)   |
| <b>D</b> WOOD'S PURPLE ASTER (5) | <b>K</b> KOREAN FEATHER REED GRASS (10)   | <b>R</b> ANNUAL FLOWERS          |
| <b>E</b> PEONY (3)               | <b>L</b> MOHICAN VIBURNUM (1)             | <b>S</b> RUSSIAN WILD RYE        |
| <b>F</b> WALL GERMANDER (15)     | <b>M</b> DWARF GLOBE BLUE SPRUCE (2)      |                                  |
| <b>G</b> BLUE FORTUNE HYSSOP (3) | <b>N</b> THE BLUES LITTLE BLUESTEM (9)    |                                  |

Visit our garden at 2855 Mesa Rd. to see this landscape in person or check out [csu.org](http://csu.org) for more information.

Looking for an urban look for your home? Use a simple palette of water-wise plants in larger groupings to create an updated, modern landscape. The shrub and masses of ornamental grasses ensure your landscape will look great throughout the year. This approach will give your yard an organized, clean look and trendy flair.

# Contemporary landscape tips:

- Incorporate a few architectural elements, such as freestanding walls or flowerpots to make your landscape interesting throughout the year.
- Plant a smaller variety of low-water plants in large groups to create an organized, urban look.
- Vary the plants' leaf size and texture to make your landscape more interesting.
- Incorporate plants with different foliage color to maximize seasonal color.
- If you are considering annual flowers, use the overspray from your grass sprinklers to irrigate these plants, which require more water.



Colorado Springs Utilities

*It's how we're all connected*

[csu.org](http://csu.org)



Carol Mackie Daphne



Little Blue Stem



Wall Germander



Rose Glow Barberry