

PARTICIPANTS EARN \$1/SF

FOR INSTALLING RESILIENT LANDSCAPES AS BEAUTIFUL AS YOUR NEW HOME.

Purpose

Colorado Springs Utilities is committed to newly constructed landscapes that thrive in our climate and require less water. This program transforms new landscape installations by incentivizing drought resilient plant material, low-water lawn alternatives, efficient irrigation equipment, and good installation practices. The goal is to create beautiful landscapes that match the beauty of new homes while thriving with limited water.



SCAN FOR PROGRAM
DETAILS

OR EMAIL LPACE@CSU.ORG
FOR MORE INFORMATION



Steps to receive the rebate:

1. Review program rules and complete the application.
2. Use proper techniques to install qualifying plants and irrigation equipment.
3. Request an inspection and provide customer information.
4. Upon approval, a rebate credit or check is awarded based on the qualified area.

Eligibility

This program is for newly constructed homes with a residential water account with Colorado Springs Utilities.

Guaranteed Success

We will help you succeed by providing water management advice and landscaping expertise, which includes the inspirational landscape designs found in this guide.

Program Requirements

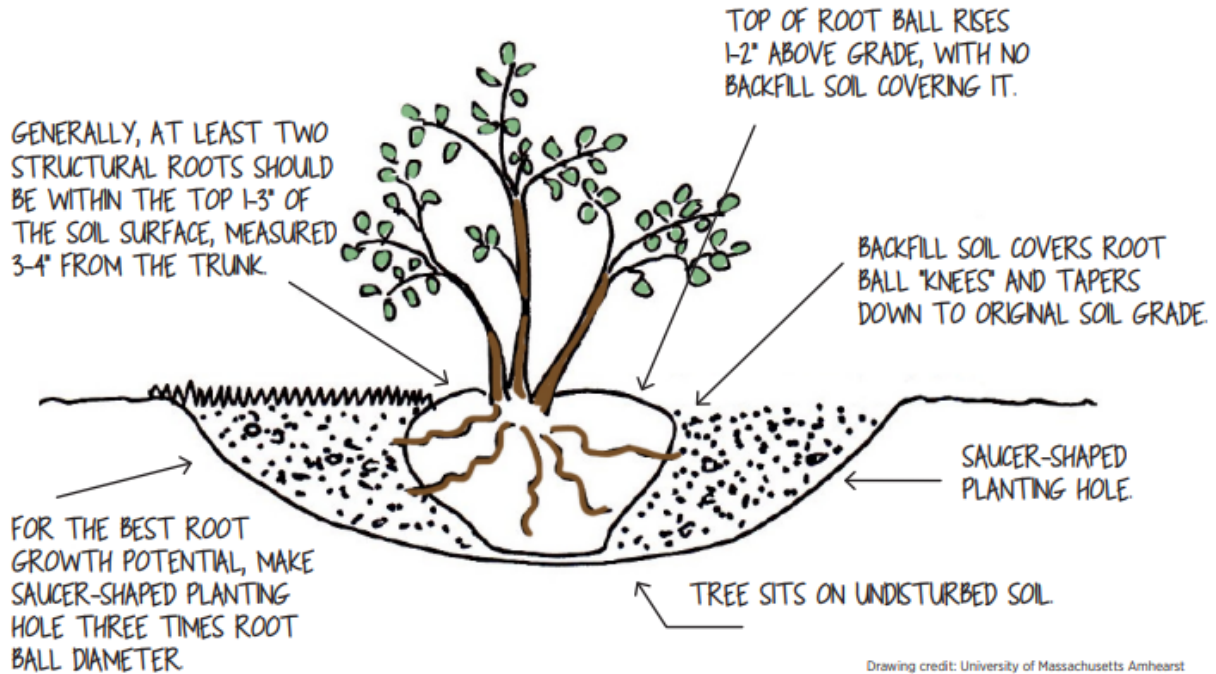


Program Rules:

To create resilient landscapes, the following requirements will be evaluated during the inspection to determine the qualifying area:

- Site must receive residential water service from Colorado Springs Utilities.
- All landscaping must be new. Renovations to existing yards do not qualify for this program.
- Lawn areas must use an approved native or well adapted low-water grass.
- Planting beds will have a 70% ground plane coverage at maturity. Dedicated drip zones that contain only approved plants will qualify.
- All landscape installation details have been followed, including correct installation of tree and plants, seed or sod, tilling and soil prep requirements, and approved mulch types and depth.
- Efficient irrigation equipment is installed according to specifications and includes heads with check valves and pressure reducing stems, rotary spray nozzles, smart irrigation controllers, rain sensors, and dedicated low water drip zones for the approved plants.
- A yard sign is installed and visible from the road, identifying the landscape as a project participant demonstrating a sustainable landscape with low water requirements.
- Confirmation that educational material has been received.
- Signed homeowner release is provided to Colorado Springs Utilities, allowing us to provide direct communication and use of site for project demonstration and educational purposes.

Required Installation Practices



Tree and shrub installation requirements:

Approximately 57% of all tree deaths are attributed to poor planting techniques. Follow the steps in this [Tree and Shrub Planting](#) guide to qualify for the rebate and help your plants thrive for generations.

Other plant installation requirements:

For all other plants, make sure the top of the root ball is slightly above grade and is not covered with backfill. Dig a saucer shaped hole approximately 2-3 times the width of the root ball and rest it on undisturbed soil. Do not amend the backfill for native plants.

Soil preparation requirements:

By choosing well adapted or native plants, intense soil amendments are not required, but make sure to alleviate any soil compaction by tilling prior to planting sod or seed. Compaction will be tested during the inspection.



Mulch requirements:

Mulch is the finishing touch to the landscape and helps retain soil moisture while limiting weed growth. Cover areas of exposed ground in planting beds areas with 3-4" of organic (wood) mulch or 2-3" of inorganic (rock) mulch. Make sure to keep the mulch slightly away from the crown of the plant. Skip the weed barrier/landscape fabric to allow for better water and air exchange into the soil. Use rock 1/2" and smaller in heavily planted areas and large rock for architectural interest. Lava rock and ground rubber do not qualify.

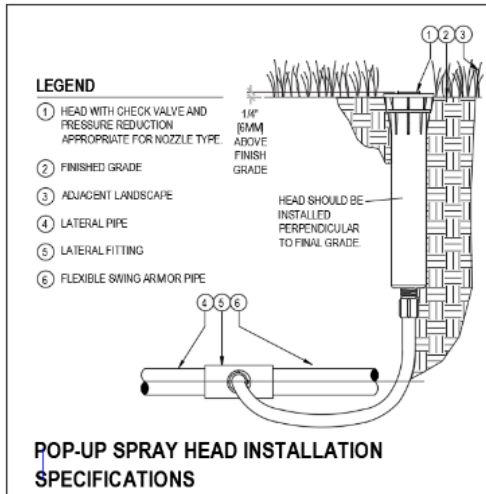
Seed installation requirements:

The area shall be free of all existing weed and plant debris prior to seeding, and the soil should be tilled 6" deep to eliminate compaction issues. No soil amendment is required. Prior to planting the final grade for soil should be set to ensure proper drainage. Buffalograss seed shall be planted 1/2" into the soil surface. Blue grama seed should be installed 1/4" deep. After seeding, the soil should be raked smooth. Hydromulch, erosion control blankets, or Penn mulch may be used to reduce washout.

Sod installation requirements:

Prior to installation, the area shall be free of all existing weed and plant debris and tilled 6" deep to eliminate compaction issues. Prior to planting, the final grade for soil should be set to ensure proper drainage. All sod joints shall be tight to prevent gaps and should run perpendicular to the primary slope.

Required Irrigation Equipment



Installing efficient irrigation equipment will help make every drop of water count and is just as important as selecting the right plants. For an area to qualify, the following irrigation equipment must be installed:

- Heads with check valves and pressure reducing stems
- Rotary spray nozzles
- Rain sensors
- Dedicated, low water drip zones for approved plant areas
- Smart irrigation controllers

Sites may qualify without any irrigation with an adequate watering plan.

Heads with check valves and pressure reducing stems:

- Install the top of the spray head $\frac{1}{4}$ " above the finish grade of the surrounding landscape.
- The head shall be perpendicular to the finish grade to maximize distribution uniformity.
- All pop-up spray heads must have pressure reduction and check valve systems for an area to qualify.
- Heads should be spaced in a triangular or square method and placed the appropriate distance apart to provide head-to-head coverage.

Rotary spray nozzles:

- All pop-up spray heads must have a rotary spray nozzle in the applicable area to qualify.
- Adjust the radius of the nozzle to minimize the amount of water spraying on impervious surfaces.
- Adjust the throw of the nozzle for a 10% overspray to allow for head-to-head coverage.

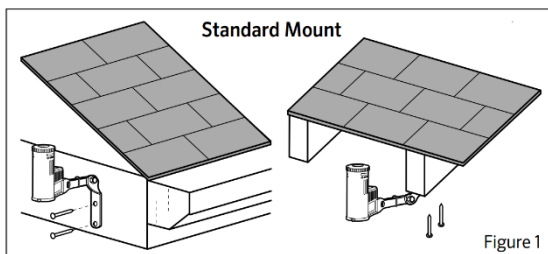
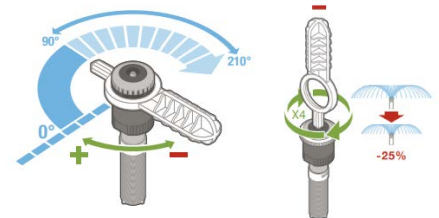


Figure 1

Rain sensors:

- Install the rain sensor on any surface where it will be exposed to unobstructed rainfall, but not in the path of sprinkler spray.
- The best location is where it can get some sunlight. A very sunny, hot location may cause the rain sensor to dry out sooner than desired, and a completely shaded area, may keep it from not drying out soon enough.

Dedicated drip zone for the approved plants:

- For a low water plant bed to qualify, only low water plants are allowed on the corresponding drip valve. This creates a hydrozone where all plants on the zone have similar water needs and therefore will not need to be watered more than once a week.

Smart irrigation controller:

- A WaterSense Certified smart irrigation controller is required for the landscape to qualify.

Approved Plant List

To qualify, all the plants on a shared drip zone must be approved plants. Prior approval must be received from Colorado Springs Utilities to use a plant not on the list. The approved list is as follows:

Lawn Options:

- Buffalograss (seed or sod)
- Blue Grama Grass (seed)
- Tahoma 31 Bermuda (sod)
- Native mixes may qualify with preapproval.

Ornamental Grasses (all cultivars):

- Big Bluestem
- Blue Grama
- Little Bluestem
- Muhlenbergia
- Prairie Dropseed
- Sacaton
- Switch Grass
- Indian Grass



Pink Allium flowers float amongst the blades of a blue grama lawn, adding extra color and interest.

Perennials (all cultivars):

- Aster
- Bearded Iris
- Bluestar (Amsonia)
- Butterfly Weed
- Catmint
- Colorado Four O'clock
- Goldenrod
- Hyssop
- Iceplant
- Jupiter's Beard
- Liatris
- Maximilian Sunflower
- Penstemon
- Partridge Feather
- Purple prairie Coneflower
- Prairie Zinnia
- Salvia
- Tennessee Coneflower
- Yarrow
- Yucca

Shrubs (all cultivars unless specified):

- Apache Plume
- Blue Mist Spirea
- Dwarf Mugo Pine
- Fernbush
- 'Gro-Low' Sumac
- Leadplant
- Mahogany
- Manzanita
- New Mexican Privet
- Peashrub
- Russian Sage
- Rabbitbrush
- Sagebrush (Artemisia)
- Spreading Juniper
- Upright Juniper
- Dwarf Globe Spruce
- Wild Blue Indigo (Baptisia)

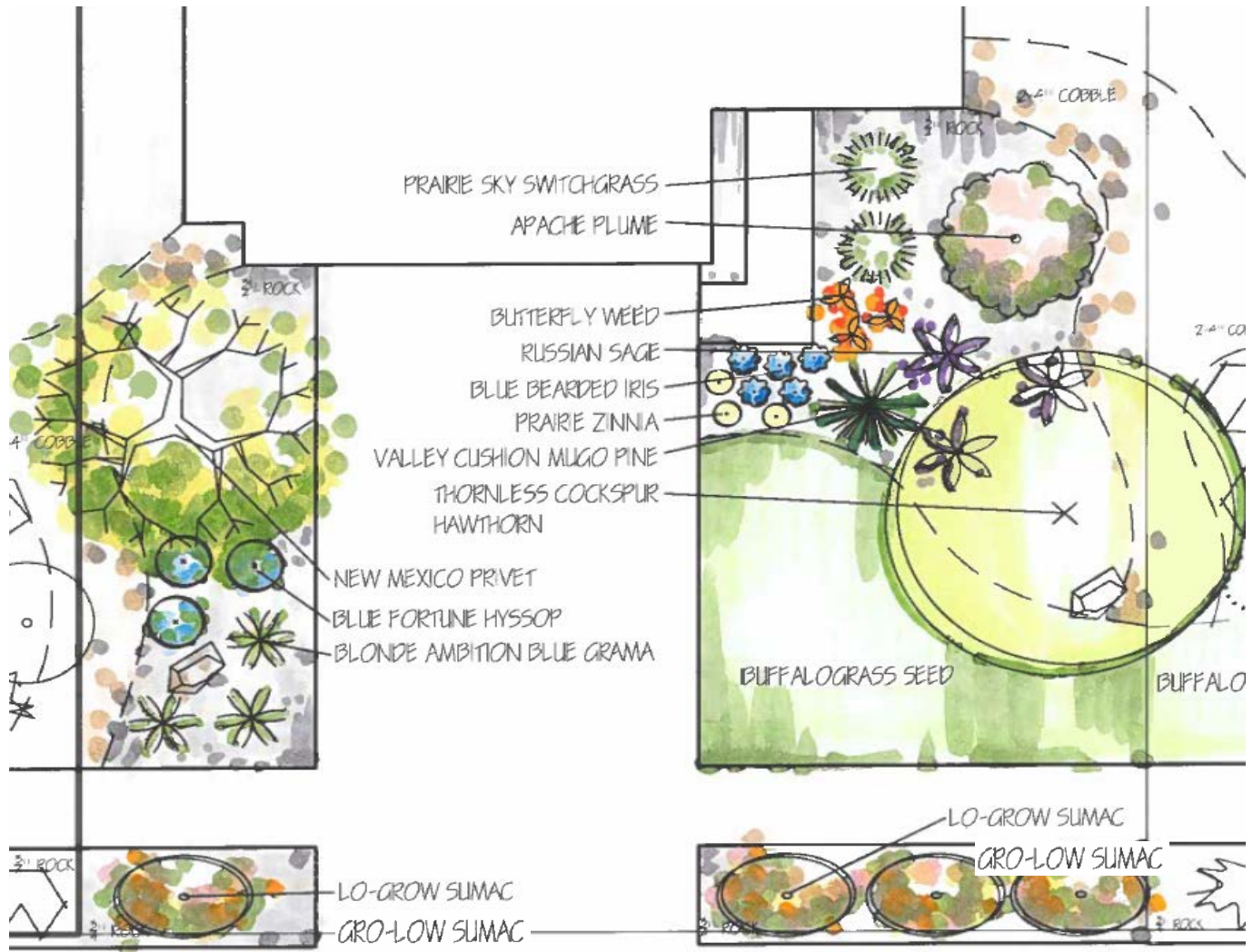
Trees:

- Bristlecone Pine
- Hackberry
- Hawthorn
- Honeylocust
- Limber Pine
- Oak (Gambel, Chinkapin, Swamp White, or Wavyleaf)
- Pinyon Pine
- Ponderosa Pine
- Serviceberry
- Sensation Boxelder

Landscape Transformation Program

Easy Care Design Typical

Maintaining a water-wise landscape requires less work than you may think. The solution lies in choosing easy care plants. This landscape features shrubs, flowers and grasses that require cut back once per year, and by installing buffalograss, monthly mowing becomes optional.



Plant list:

Trees and Ornamental grasses

- 3 Blonde Ambition Blue Grama
- 2 Prairie Sky Switchgrass
- 1 New Mexico Privet
- 1 Thornless Cockspur Hawthorn

Shrubs

- 1 Apache Plume
- 4 Gro-Low Sumac
- 3 Russian Sage
- 1 Valley Cushion Mugo Pine

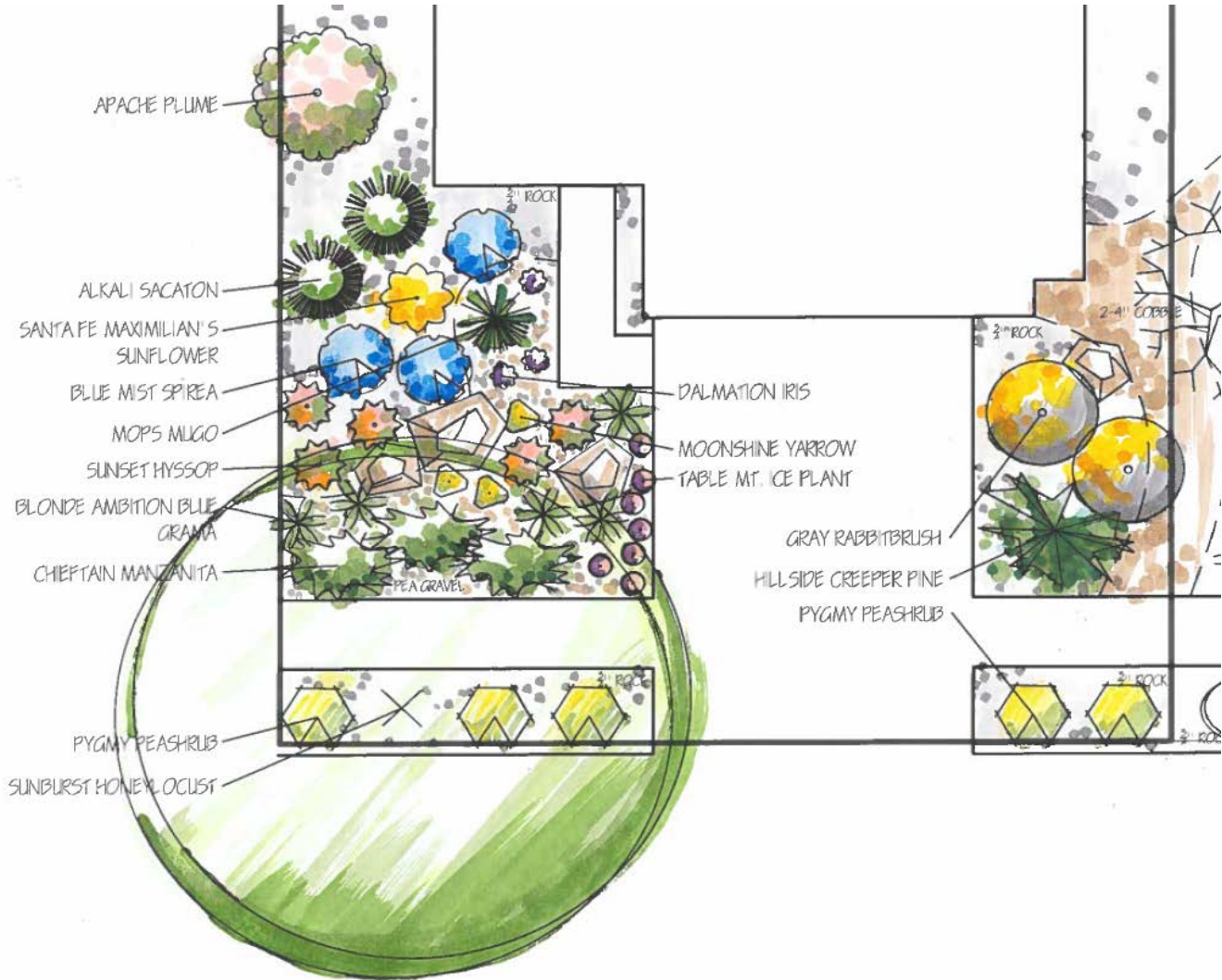
Perennials

- 5 Bearded Iris
- 3 Blue Fortune Hyssop
- 3 Butterfly Weed
- 3 Prairie Zinnia

Landscape Transformation Program

No Turf Design Typical

Sometimes the best option is to eliminate the turf in small front yards. This solution provides lots of interest through color and texture while focusing on plants that will thrive on one-day-per-week watering.

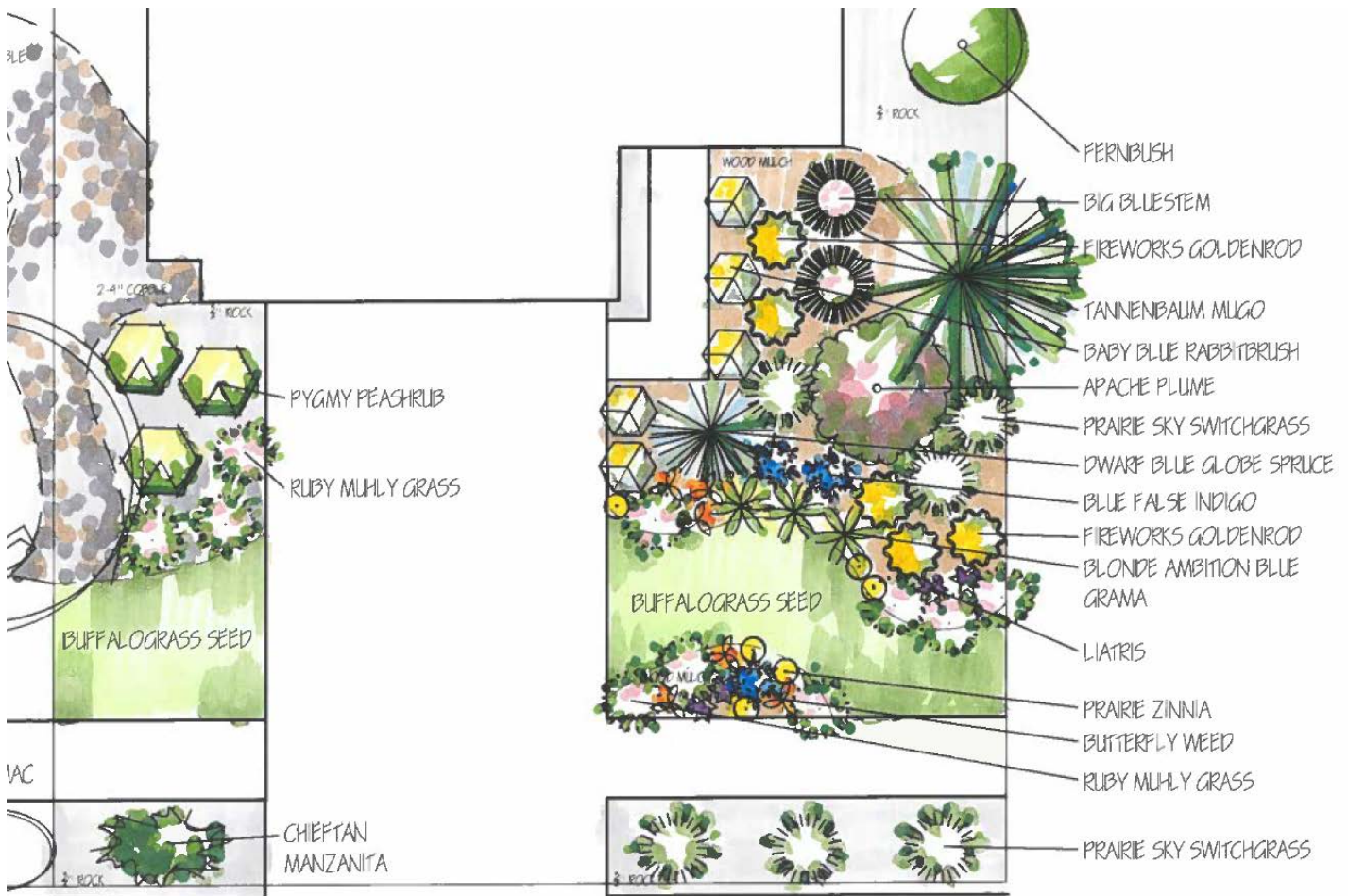


Plant list:

- | | | |
|------------------------------|-------------------------|------------------------------------|
| 1 Sunburst Honey Locust | 3 Chieftain Manzanita | 1 Mops Mugo |
| 2 Alkali Sacaton | 3 Dalmatian Iris | 5 Pygmy Peashrub |
| 1 Apache Plume | 2 Gray Rabbitbrush | 1 Santa Fe Maximillian's Sunflower |
| 5 Blonde Ambition Blue Grama | 1 Hillside Creeper Pine | 5 Sunset Hyssop |
| 3 Blue Mist Spirea | 3 Moonshine Yarrow | 7 Table Mt. Ice Plant |

Landscape Transformation Program Native Prairie Design Typical

If you are looking for a landscape that mimics our native prairie, this plan is for you. This landscape transcends the typical lawn into a prairie paradise by blending the edges of where the lawn begins and the wildflowers end.



Plant list:

1 Tannenbaum Mugo Pine

1 Apache Plume

5 Baby Blue Rabbitbrush

1 Dwarf Globe Blue Spruce

1 Fernbush

3 Pygmy Peashrub

1 Chieftan Manzanita

2 Big Bluestem Grass

6 Prairie Sky Switchgrass

5 Blonde Ambition Blue Grama

10 Undaunted Ruby Muhly Grass

3 Blue False Indigo

6 Butterfly Weed

5 Fireworks Goldenrod

4 Liatris

6 Prairie Zinnia